



Actives



INGREDIENTS

SOCRI

LESSONIA
cosmetics + ingredients

C+eRAMIDE®

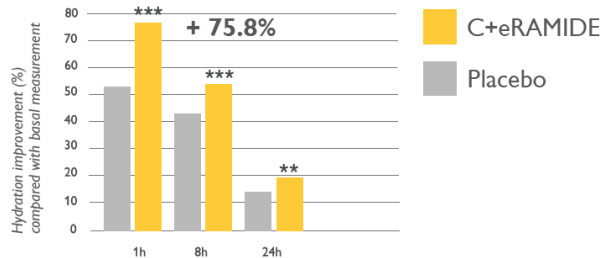
INCI: *Triticum vulgare* (Wheat) Seed Extract

KEY PROPERTIES

C+eRAMIDE is a ceramide in powder form that comes from wheat. It is a synergistic complex composition of Glycosylceramides and DGDG (Digalactosyl Diglyceride). C+eRAMIDE:
 Deeply hydrates and prevents moisture loss
 Restores and repairs skin and hair, improving texture
 Calms sensitive skin and reduces redness
 Strengthens the skin barrier providing a protective moisture film.
 C+eRAMIDE is 100% natural, vegan, gluten free & GMO free.

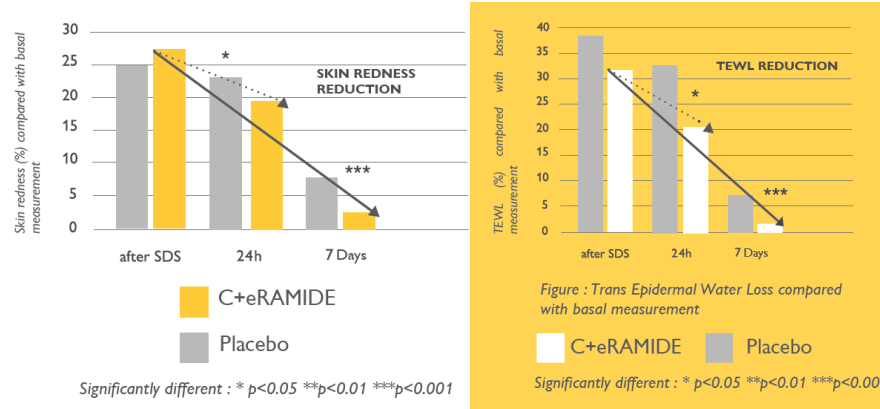
EFFICACY TESTS

C+eRAMIDE boosts skin hydration by up to 35% and strengthens the skin barrier by 25%, enhancing moisture retention and protection. It also reduces redness by 30%, effectively soothing sensitive or irritated skin.



Significantly different : * p<0.05 **p<0.01 ***p<0.001

PLANT AND NATURAL INGREDIENT NOURISHING THE EPIDERMIS



Significantly different : * p<0.05 **p<0.01 ***p<0.001

Significantly different : * p<0.05 **p<0.01 ***p<0.001

APPLICATIONS

Skincare: Creams, Serums, Gels, Masks, Cleansers
 Makeup: Primers, Foundations, Concealers, Lipsticks
 Haircare: Conditioners, Hair masks, Serums, Oils

% OF USE

0.1%

TECHNICAL DATA

APPEARANCE	POWDER
COLOUR	WHITE
FRAGRANCE	CHARACTERISTIC
MOLECULAR WEIGHT	> 1 million Da
GLUCURONIC ACID CONTENT	> 18%
SOLUBILITY	WATER
NATURALITY INDEX	1 (ISO 16 128)



HYDRATING

SOOTHING

SKIN TEXTURE

SKIN BARRIER



100% natural

COSMOS
compliant

OK China



SOCRI

LESSONIA
cosmetics + ingredients

Actives

Easy WAY®

INCI: Cellulose acetate

KEY PROPERTIES

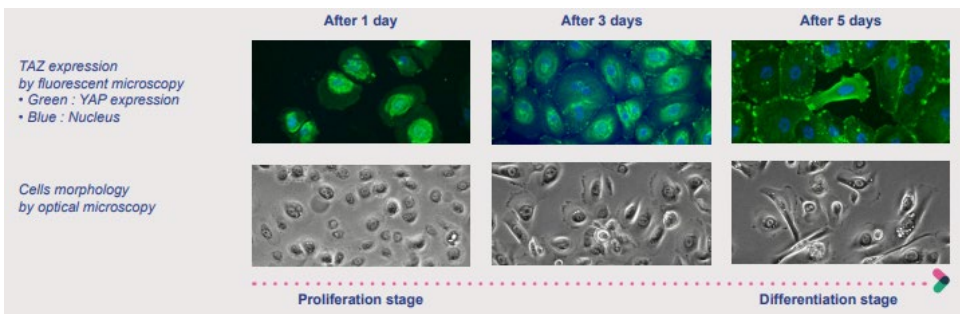
Easy WAY is an innovative cosmetic ingredient that activates skin renewal through mechanobiology.

It harnesses the HIPPO signaling pathway, which stimulates keratinocyte proliferation and regulates differentiation, promoting skin regeneration without the use of chemical agents.

Derived from fine cellulose acetate particles, it is designed for daily use and helps restore a youthful, healthy-looking complexion.

EFFICACY TESTS

In Vitro: Easy WAY increased keratinocyte proliferation by 37% within 5 days and activated the HIPPO signaling pathway, crucial for skin regeneration.



THE FIRST COSMETIC INGREDIENT THAT ACTIVATES SKIN RENEWAL BY MECHANOBIOLOGY



Clinical Test:

In a study with 20 volunteers, Easy WAY accelerated skin renewal by 46.5%, significantly improving skin texture, eliminating imperfections

APPLICATIONS

Skincare creams and serums

% OF USE

3.5%

Formulation tips: can be added at the end of the formulation in process, under gently stirring

TECHNICAL DATA

APPEARANCE	POWDER
COLOUR	WHITE
FRAGRANCE	CHARACTERISTIC
PARTICLE SIZE	100-200 µm
NATURALITY INDEX	0.56 (ISO 16 128)
PRESERVATIVE	NONE



SKIN RENEWAL

SKIN TEXTURE

WELL-AGEING

SOCRI

LESSONIA
cosmetics + ingredients

OK China



Actives

FUCOREVERSE®

INCI: Glycerin, Aqua, Hydrolyzed fucoidan

KEY PROPERTIES

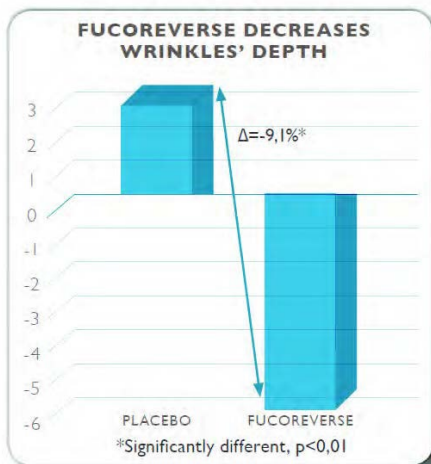
Fucoreverse is a unique blend of low molecular weight fucoidans, derived from the cell walls of Laminaria seaweed, an upcycled extract from the Iroise Marine Natural Park in Brittany, France.

The process involves hydrolyzing fucoidans and concentrating them through purification, resulting in a mixture of sulfated fucose mono, di, and trimers with a molecular weight under 2 kDa.

Designed as a well-ageing ingredient, Fucoreverse supports the skin's natural defense and repair mechanisms.

EFFICACY TESTS

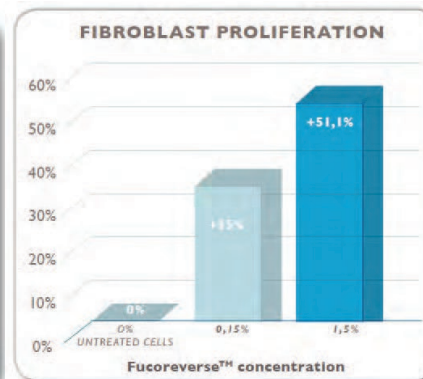
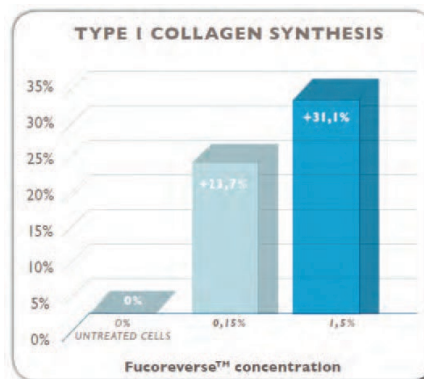
Fucoreverse boosts cellular activity and fibroblast production by 20%, enhancing skin regeneration. It increases collagen and elastin levels by 25%, improving skin firmness and elasticity. After 4 weeks, it reduces wrinkle depth by up to 18%, effectively smoothing and rejuvenating the skin.



SOCRI

LESSONIA
cosmetics + ingredients

SEAWEED EXTRACT FOR WELL-AGEING



APPLICATIONS

Skincare: Creams, Serums, Gels, Masks, Cleansers
Makeup: Primers, Foundations, Concealers, Lipsticks
Haircare: Conditioners, Hair masks, Serums, Oils

% OF USE

1.5%

Formulation tips: Can be added to the water phase.
Formulated at any temperature and a pH between 3 and 8.

TECHNICAL DATA

APPEARANCE	LIMPID LIQUID
COLOUR	YELLOW
SOLUBILITY	WATER
NATURALITY INDEX	1 (ISO 16 128)
PRESERVATIVE	NONE



COLLAGEN BOOSTER

SMOOTHING

FIRMING

WELL-AGEING



100% natural

COSMOS compliant

OK China

Actives

FUCOWHITE®

INCI: Glycerin, Aqua, Ascophyllum Nodosum extract

KEY PROPERTIES

Fucowhite is a marine biotechnology ingredient derived from the brown algae *Ascophyllum nodosum*, designed to provide effective skin-brightening benefits.

It works by inhibiting tyrosinase, the enzyme responsible for melanin production, resulting in a visible reduction of dark spots and a more radiant complexion.

Additionally, Fucowhite offers well-ageing properties by stimulating collagen synthesis and protecting skin cells from oxidative stress, thanks to its fucoxanthin content, making it ideal for both brightening and well-ageing skincare routines.

EFFICACY TESTS

- Skin Lightening: Clinical studies showed that Fucowhite significantly reduces dark spots, with 67% of participants noticing a decrease in hyperpigmentation after 28 days of use.
- Brightness Improvement: Users experienced a 20% increase in skin brightness and a more even complexion.
- Skin Elasticity: Fucowhite also demonstrated improvements in skin firmness, promoting elasticity and smooth texture, contributing to a youthful appearance.

SOCRI

LESSONIA
cosmetics + ingredients

ANTI-DISCROMIAS MARINE ACTIVE INGREDIENT

APPLICATIONS

Creams, serums, and lotions targeting pigmentation and dark spots. Formulations that combine brightening and well-ageing benefits. Gentle enough for products designed for sensitive skin types.

% OF USE

2%

TECHNICAL DATA

APPEARANCE	LIQUID
COLOUR	BROWN
FRAGRANCE	CHARACTERISTIC
SOLUBILITY	WATER SOLUBLE
NATURALITY INDEX	1 (ISO 16 128)
PRESERVATIVE	NONE



ANTI-DISCROMIAS

BRIGHTENING

FIRMING

100% natural



COSMOS compliant



OK China



Actives

HEALTHYSKIN®

INCI: Glycerin, Aqua, Chlorella Vulgaris Extract

KEY PROPERTIES

Healthyskin is a marine biotechnology active ingredient designed to restore the skin's natural defense mechanisms and boost epidermal renewal.

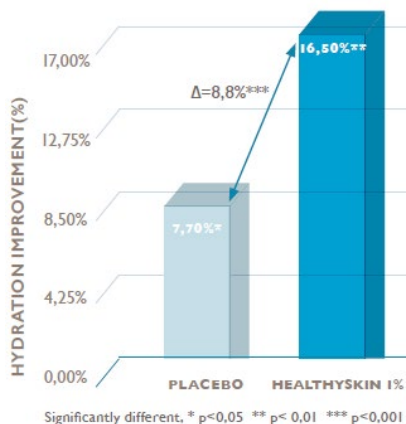
Derived from oligo-carrageenan through enzymatic hydrolysis, it strengthens the skin barrier, promotes hydration, and enhances skin texture. Its global approach addresses multiple skin concerns, making it ideal for healthy-ageing skincare.

EFFICACY TESTS

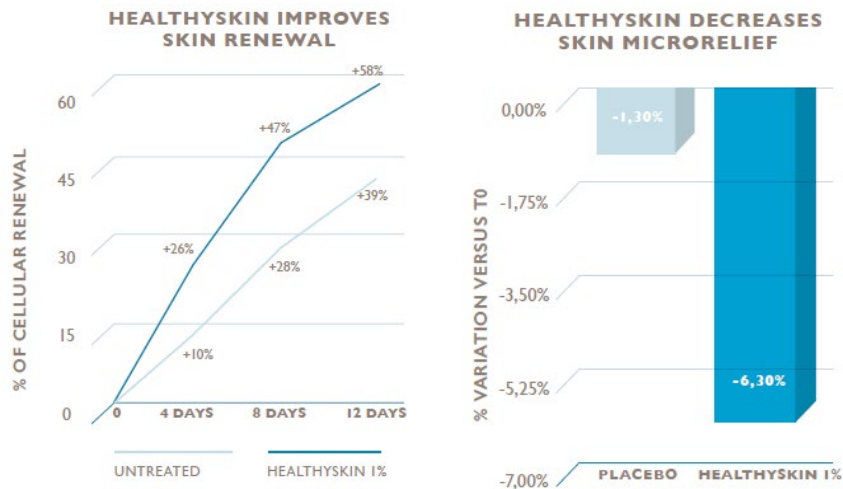
Healthyskin demonstrated significant improvements in clinical tests. It boosted skin hydration by 16.5% and reinforced the barrier function over 28 days, with 95% of participants reporting improved hydration.

It also doubled the rate of epidermal renewal in just 4 days, reducing skin imperfections. Additionally, after 28 days, it smoothed skin texture, reducing microrelief by 6.3%, with improvements of up to 42.9%

HEALTHYSKIN IMPROVES HYDRATION & BARRIER FUNCTION



RESTORING THE HEALTHY EPIDERMAL PHYSIOLOGICAL MECHANISMS



APPLICATIONS

Moisturizers and Creams, Serums, Well-ageing treatments

% OF USE

1%

TECHNICAL DATA

APPEARANCE	LIQUID
COLOUR	YELLOW
FRAGRANCE	CHARACTERISTIC
SOLUBILITY	WATER
NATURALITY INDEX	1 (ISO 16 128)

SKIN TEXTURE

MOISTURIZING

SKIN RENEWAL

SKIN BARRIER

100% natural

COSMOS compliant

OK China

Actives

SOCRI

LESSONIA
cosmetics + ingredients

LAMINARIA GLYCERIN EXTRACT

INCI: Glycerin, Aqua, Laminaria Digitata Extract

KEY PROPERTIES

Laminaria Glycerin Extract is a powerful, natural ingredient derived from Laminaria digitata, a seaweed found in the pure, non-polluted waters of Brittany, France.

Rich in essential minerals, vitamins, and active compounds, this extract is widely recognized for its effectiveness in slimming, revitalizing, and moisturizing cosmetic formulations.

With a unique composition that includes organic iodine, mannitol, and amino acids, Laminaria Glycerin Extract supports lipid regulation, skin cell renewal, and hydration.

Thanks to its emollient properties, this extract also improves the texture of the formula.

POWERFUL SEAWEED-DERIVED INGREDIENT

APPLICATIONS

Slimming gels, Contouring creams
and other skincare products

TECHNICAL DATA

APPEARANCE	LIQUID
COLOUR	PALE YELLOW
FRAGRANCE	CHARACTERISTIC
DENSITY	1.10 – 1.25
pH	6 – 7.5
VISCOSITY	20 – 70 mPas
MINERAL MATTER	25 – 28%
ORGANIC MATTER	65 – 80%
SOLUBILITY	WATER
NATURALITY INDEX	> 0.975 (ISO 16 128)



MOISTURIZING

REMINALIZING

SLIMMING

OK China



SOCRI

LESSONIA
cosmetics + ingredients

Actives

LYCOMEGA®

INCI: *Solanum lycopersicum* seed oil, *Caprylic/capric triglyceride*, *Vaccinium macrocarpon* seed oil, *Helianthus annuus* seed oil, *Tocopherol*, *Lycopene*

KEY PROPERTIES

Lycomega is a potent natural ingredient derived from a unique blend of tomato lycopene and cranberry seed oil.

The active compounds contained in LycoMega® are extracted from the seeds of tomatoes and cranberries without any chemical process.

This innovative extract combines the powerful antioxidant properties of lycopene with the nourishing, omega-rich profile of cranberry seed oil, offering exceptional benefits for well-ageing skincare.

Lycomega is designed to protect the skin from environmental stressors, reduce the visible signs of ageing, and enhance skin

EFFICACY TESTS

In in vitro tests LycoMega decreased the cytotoxicity of UVB treated human keratinocytes by 40.5%, as well as having an ORAC value of 1,700 per 100g.

HAIR CARE AND REMINERALIZING ACTIVE INGREDIENT FROM CAMARGUE SALT MARSHES

APPLICATIONS

Serums, creams, and other skincare formulations focused on skin health and vitality

TECHNICAL DATA

APPEARANCE	POWDER
FRAGRANCE	CHARACTERISTIC
NATURALITY INDEX	1 (ISO 16 128)



WELL-AGEING

NOURISHING

ANTIOXIDANT

100% natural



OK China



SOCRI

LESSONIA
cosmetics + ingredients

Actives

MARINE SERUM

INCI: *Maris sal, Aqua*

NATURAL LIQUID EXTRACT MANUFACTURED FROM SEAWATER

KEY PROPERTIES

Marine serum is a concentrate of all the trace elements contained in seawater. It contains the more interesting minerals elements contained in seawater because of the sodium chloride has been removed.

The ideal balance of minerals explain the cosmetic properties. This marine serum is especially designed for balneotherapy, thalassotherapy and spa treatments. This serum can be added to any treatments for a boost in the activity of the mask or wrap.

The water is slowly evaporated by a heating process. This process results in the concentration of minerals salts contained in seawater. A large part of sodium chloride is eliminated because it crystallizes first.

APPLICATIONS

Balneotherapy, Thalassotherapy, Spa treatments
Revitalizing masks and wraps

% OF USE

1 – 10%

TECHNICAL DATA

APPEARANCE	LIQUID
COLOUR	PALE YELLOW
FRAGRANCE	CHARACTERISTIC
pH (DIRECT)	5 - 6
MAGNESIUM CONTENT	6 – 11%
SOLUBILITY	WATER SOLUBLE
NATURALITY INDEX	1 (ISO 16 128)
PRESERVATIVE	NONE



HAIR & SKIN REVITALIZING

REMINERALIZING

100% natural



OK China



SOCRI

LESSONIA
cosmetics + ingredients

Actives

SAPONIN+®

INCI: *Camellia Oleifera* seed extract

KEY PROPERTIES

SAPONIN+ is a 100% natural, plant-based powder derived from the residue of *Camellia oleifera* seeds after oil extraction. This upcycled ingredient offers powerful surfactant properties, making it an excellent alternative to traditional synthetic SLS or SLES surfactants in cosmetic formulations. With over 60% saponin content, SAPONIN+ provides foaming, cleansing, and antimicrobial benefits, making it ideal for a wide range of personal care products. Its ability to produce a generous, stable foam ensures a luxurious sensory experience, while its natural antimicrobial properties enhance the safety and effectiveness of the formulations.

EFFICACY TESTS

Figure: Classical surfactant agent on the left. SAPONIN+ on the right.



Image: T0 - test tubes has just been shaken. Foam appears on both tubes



Image: After 10 minutes. Foam is still the same on SAPONIN+ test tube while foam disappears on classical surfactant agent tube

SOCRI

LESSONIA
cosmetics + ingredients

UPCYCLED NATURAL AND PLANT ALTERNATIVE TO SURFACTANTS

- **Foaming Test:** Saponin+ performs comparably to standard surfactants, maintaining foam stability over time.
- **Antimicrobial Activity:** Studies show significant inhibitory activity against bacteria and fungi, with results comparable to gentamicin (against bacteria) and potassium sorbate (against fungi).

APPLICATIONS

Powder cleansers, Micellar water, Shower gels and shampoos, Toothpaste and mouthwash, Cleansing pastes

% OF USE

1 %

Formulation tips: Easily dispersible in water; both hot and cold processable. Effective in a wide range of pH, compatible with most cosmetic ingredients.

TECHNICAL DATA

APPEARANCE	POWDER
COLOUR	BEIGE
FRAGRANCE	CHARACTERISTIC
SAPONIN CONTENT	> 60 %
NATURALITY INDEX	1 (ISO 16 128)



FOAMING

CLEANSING

ANTIMICROBIAL



100% natural

COSMOS compliant

OK China

Actives

SEATRACE®

INCI: *Maris sal*

KEY PROPERTIES

Seatrace boosts skin hydration, soothes irritation, and supports the remineralization of both skin and hair. Its fine powder form integrates seamlessly into various cosmetic formulations without affecting emulsion stability.

Magnesium promotes cell regeneration and collagen synthesis, sodium aids hydration and pH balance, potassium facilitates intercellular exchange, calcium enhances skin firmness, zinc regulates sebum, and copper improves elasticity and supports healthy ageing.

EFFICACY TESTS

Efficacy tests showed that a 2% Seatrace solution increased curl definition by up to 50% compared to placebo, with 90% of volunteers reporting enhanced wave formation on both wet and dry hair. This confirms Seatrace's ability to boost curls, volume, and hold in hair care products.

HAIR CARE AND REMINERALIZING ACTIVE INGREDIENT FROM CAMARGUE SALT MARSHES

APPLICATIONS

Skincare: Moisturizers, Soothing creams, Masks, Serums
Haircare: Leave-in conditioners, Curl enhancers, Shampoos, Hair masks

% OF USE

0.5% to 10%

Formulation tips: Can be incorporated into the water phase and heated to 80°C.

For emulsions and gels, non-ionic emulsifiers and/or electrolyte-tolerant gelling agents are recommended.

TECHNICAL DATA

APPEARANCE	POWDER
COLOUR	WHITE
FRAGRANCE	CHARACTERISTIC
MAGNESIUM CONTENT	> 12%
SODIUM CONTENT	10 – 12%
POTASSIUM CONTENT	3 – 4%
ZINC, CALCIUM COPPER	TRACE AMOUNT
SOLUBILITY	WATER SOLUBLE
NATURALITY INDEX	1 (ISO 16 128)
PRESERVATIVE	NONE



REMINERALIZING

SOOTHING

HAIR & SKIN REVITALIZING

CURL BOOSTER



100% natural

COSMOS
compliant

OK China



SOCRI

LESSONIA
cosmetics + ingredients

SPIRULINA GLYCERIN EXTRACT

INCI: Glycerin, Aqua, Spirulina maxima

KEY PROPERTIES

Spirulina Glycerin Extract is a natural liquid extract derived from Spirulina maxima, a blue-green algae renowned for its high concentration of peptides, vitamins, and minerals.

This extract is carefully crafted through a filtration process following a long maceration and stirring of the algae in a mixture of glycerin and water.

Sourced from Asia and produced in Brittany, France, Spirulina Glycerin Extract offers revitalizing and moisturizing properties, making it an ideal ingredient for well-ageing and hydrating skincare products.

Its rich content of active compounds like peptides supports skin health by promoting hydration and rejuvenation.

NATURAL LIQUID EXTRACT
MANUFACTURED FROM SPIRULINA ALGAE

APPLICATIONS

Skincare: Moisturizing creams, Well-ageing serums,
Revitalizing masks, Hydrating lotions

Body Care: Rejuvenating/Hydrating creams and gels

% OF USE

1% - 10%

Formulation tips: Add Spirulina Glycerin Extract to the water phase at a temperature between 20°C to 50°C.

TECHNICAL DATA

APPEARANCE	LIQUID
COLOUR	COLOURLESS / YELLOWISH
FRAGRANCE	NONE
TOTAL GERMS	< 100 cfu/g
YEAST AND MOULD	< 10 cfu/g
SOLUBILITY	WATER SOLUBLE
NATURALITY INDEX	0.975 (ISO 16 128)
PRESERVATIVE	NONE



REVITALIZING

MOISTURIZING

OK China



SOCRI

LESSONIA
cosmetics + ingredients

Actives

TREMEL+HA®

INCI: Tremella Fuciformis Polysaccharide

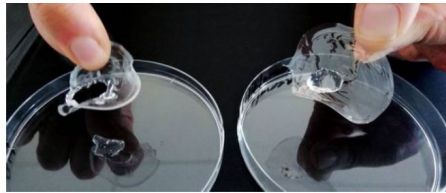
KEY PROPERTIES

TREMEL+HA is a 100% natural moisturizing ingredient derived from the Tremella Fuciformis mushroom, also known as the “Snow Fungus.” Recognized for its powerful hydrating properties, TREMEL+HA is a plant-based alternative to hyaluronic acid, offering superior moisture retention, skin feel, and antioxidant benefits.

Unlike traditional hyaluronic acid, TREMEL+HA forms a hydrophobic film on the skin, delivering a long-lasting, non-shrink effect without the tightness often associated with other moisturizers. This innovative ingredient is ideal for use in a wide range of skincare, haircare, and makeup formulations.

EFFICACY TESTS

TREMEL+HA boosted skin hydration by 64.41% after 3 hours, outperforming hyaluronic acid. It also showed strong antioxidant properties, with 34% DPPH radical scavenging activity at 0.08%. TREMEL+HA formed a durable hydrophobic film, unlike hyaluronic acid, which broke down quickly.



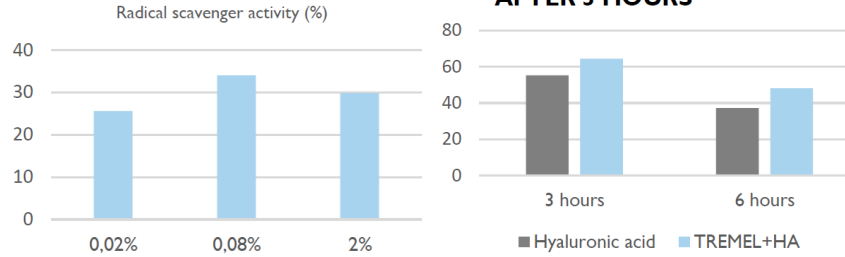
HA

TREMEL+HA

POWERFUL MOISTURIZING MOLECULE, STRONGER THAN HYALURONIC ACID

Figure: skin hydration

Significative difference : * $p < 0,05$



APPLICATIONS

Skincare: Moisturizers, Soothing creams, Masks, Serums

% OF USE

0.1%

TECHNICAL DATA

APPEARANCE	POWDER
COLOUR	WHITE
FRAGRANCE	CHARACTERISTIC
MOLECULAR WEIGHT	> 1 million Da
GLUCURONIC ACID CONTENT	> 18%
SOLUBILITY	WATER SOLUBLE
NATURALITY INDEX	1 (ISO 16 128)
PRESERVATIVE	NONE



MOISTURIZING

ANTIOXIDANT

FILM FORMING

100% natural



COSMOS compliant



OK China



SOCRI

LESSONIA
cosmetics + ingredients

Actives

ULVA GLYCERIN EXTRACT

INCI: Glycerin, Aqua, Ulva Lactuca Extract

KEY PROPERTIES

Ulva Glycerin Extract is a natural liquid extract derived from Ulva Lactuca, commonly known as sea lettuce.

This extract is produced through a meticulous process of maceration and filtration of Ulva seaweed in a glycerin and water mixture.

Rich in amino acids, proteins, and polysaccharides, Ulva Glycerin Extract is highly valued for its revitalizing and moisturizing properties, making it an ideal ingredient for firming and contouring skincare products.

Produced in Brittany, France, this extract is preservative-free and complies with ISO 16128 standards for natural and organic cosmetic ingredients.

NATURAL LIQUID EXTRACT
MANUFACTURED FROM ULVA ALGAE

APPLICATIONS

Skincare: Moisturizing creams, Well-ageing serums,
Revitalizing masks, Hydrating lotions

Body Care: Rejuvenating/Hydrating creams and gels

% OF USE

1% - 10%

Formulation tips: Add Ulva Glycerin Extract to the water phase at a temperature between 20°C to 50°C.

TECHNICAL DATA

APPEARANCE	LIQUID
COLOUR	COLOURLESS / YELLOWISH
FRAGRANCE	NONE
MICROBIOLOGY	< 100 cfu/g
pH (DIRECT)	7 - 8
SOLUBILITY	WATER SOLUBLE
NATURALITY INDEX	0.975 (ISO 16 128)
PRESERVATIVE	NONE



REVITALIZING

MOISTURIZING

OK China



SOCRI

LESSONIA
cosmetics + ingredients

Actives

WAKAME GLYCERIN EXTRACT

INCI: Glycerin, Aqua, Undaria Pinnatifida Extract

KEY PROPERTIES

Wakame Glycerin Extract is a natural liquid extract derived from Undaria pinnatifida, commonly known as Wakame, a nutrient-rich brown seaweed.

This extract is produced through a gentle maceration process that preserves the vital bioactive compounds found in Wakame.

Known for its powerful antioxidant, well-ageing, and moisturizing properties, Wakame Glycerin Extract is an ideal ingredient for enhancing skin elasticity, hydration, and overall radiance.

Perfectly suited for use in well-ageing creams, moisturizing lotions, and revitalizing serums, this extract is a versatile addition to any skincare formulation.

NATURAL LIQUID EXTRACT
MANUFACTURED FROM ULVA ALGAE

APPLICATIONS

Skincare: Well-ageing creams, Moisturizing lotions,
Firming serums, Revitalizing masks

Body Care: Hydrating/Well-ageing creams, gels, lotions

% OF USE

1% - 10%

Formulation tips: Add Wakame Glycerin Extract to the water phase at a temperature between 20°C to 50°C.

TECHNICAL DATA

APPEARANCE	LIQUID
COLOUR	YELLOWISH
FRAGRANCE	NONE
MICROBIOLOGY	< 100 cfu/g
YEAST AND MOULD	< 10 cfu/g
pH (DIRECT)	5 – 7.5
SOLUBILITY	WATER SOLUBLE
NATURALITY INDEX	0.975 (ISO 16 128)
PRESERVATIVE	NONE



ANTIOXIDANT

REVITALIZING

MOISTURIZING

OK China



SOCRI

LESSONIA
cosmetics + ingredients

Actives

LESSONIA
cosmetics + ingredients

SOCRI

LESSONIA

è distribuita in Italia in esclusiva da

SOCRI S.r.l.

Via Majocchi 13/B, 27020 Torre d'Isola (PV), Italy

0382 408159 - info@socri.it

www.socri.it

